



East of England
Local Government Association

Promoting strategic thinking and collaboration in the East

Cinar Altun

Policy and Secretariat Manager

Our Aims

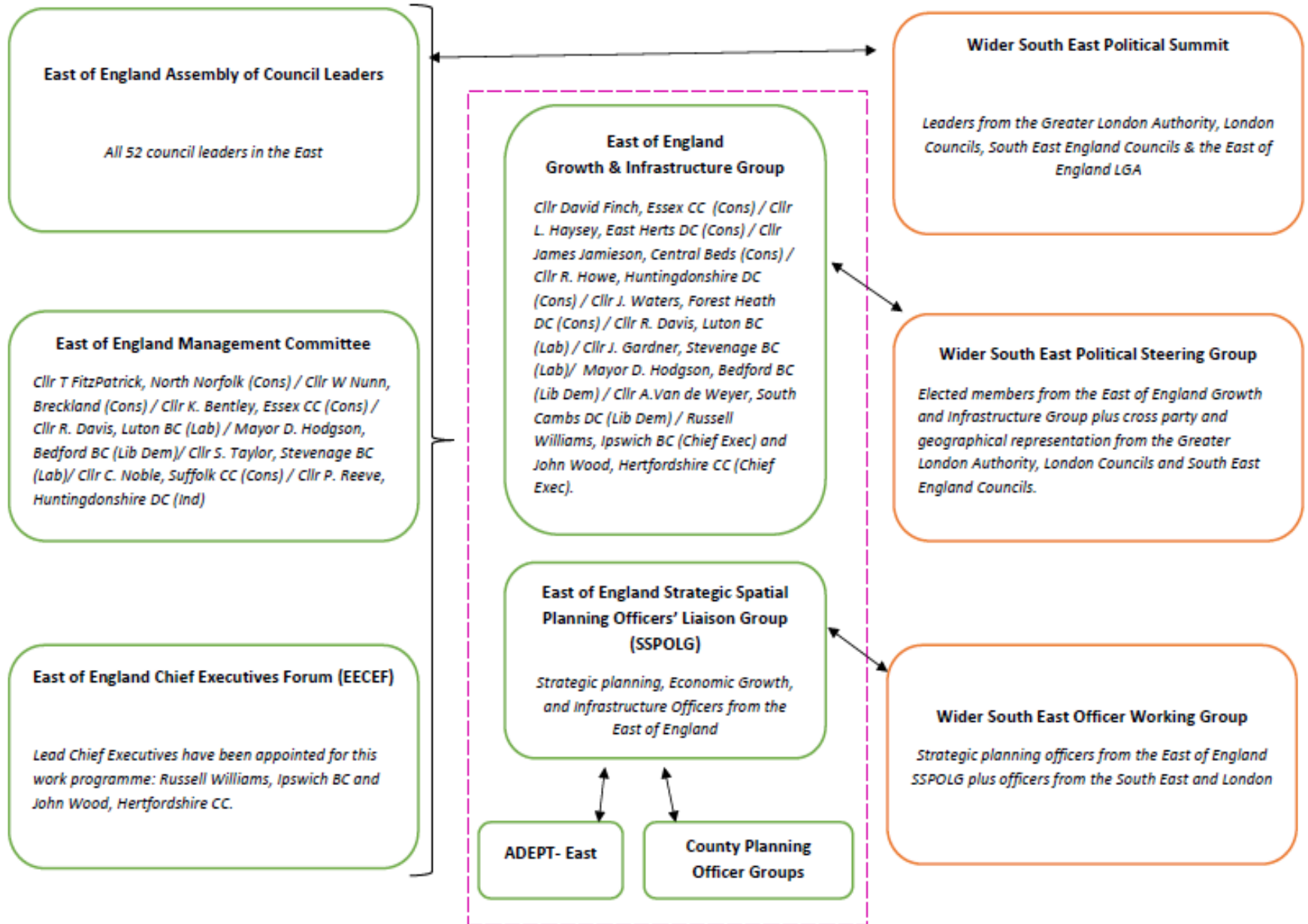


- Promote the role of member councils in achieving economic prosperity and sustainable growth in the East of England
 - Foster a more equal relationship between the East of England, London and the South East
 - Create positive political relationships and forums for discussion and strategic leadership.
-

How?

- Understand the key challenges/strengths of the East of England economy and our member councils
 - Promote collaboration and joint working by councils within the East to tackle these, and
 - Facilitate political and officer level engagement with wider partners in London and the South East on issues of common concern.
-

Governance



Key Areas

- Preparation and timing of the full review of the London Plan
 - Achieving a common understanding of the data/evidence base
 - Addressing barriers to housing delivery
 - Making the case for strategic infrastructure investment
-

Our ambitions for the WSE



- Building political engagement and trust across the WSE on future growth and economic potential.
 - Harnessing the collective strength of the Wider South East Partners to make the case for strategic infrastructure investment and progress identified schemes of mutual benefit.
 - Working together to engage with central government and wider partners to deliver housing and economic benefits across the WSE.
-

What's in it for the East?



Not a new planning tier, our work is focused on:

- Engage/influence the Mayor of London's Review of the London Plan,
 - Undertake effective duty to cooperate and delivery on local plans, and
 - Inspire confidence in the private sector to invest in the East of England
-

Our offer to London



- Helping London to understand the local challenges faced by councils in the East as a result of London's growth.
 - Helping councils in the East understand the challenges faced by London.
 - Facilitating conversations between the GLA and "willing" councils in the East of England.
 - Working together with the GLA on joint strategic priorities, such as barriers to housing delivery and infrastructure investment which can help support our overlapping economies.
-

Joint Lobbying

Housing and Infrastructure

- East West Rail, and new road link (Oxford –Cambridge)
 - Felixstowe to Midlands (Felixstowe to Nuneaton Rail – F2N – and A14 Capacity Improvements)
 - North Downs Rail Link (Gatwick – Reading) and extension to Oxford
 - A27/M27/A259 and rail corridor (Dover – Southampton)
 - West Anglia Corridor and Crossrail 2 North (London – Stansted-Cambridge-Peterborough)
 - Great Eastern Corridor
 - Thames Gateway Essex: C2C and Crossrail 2 – Eastern Branch (London – South Essex / London Gateway Port)
 - Thames Gateway Kent: Crossrail 1 extension East and HS1 route (London – North Kent – Channel Tunnel)
 - Lower Thames Crossing
 - Brighton Mainline (London – Gatwick – Brighton)
 - South West Mainline and Crossrail 2 South West (London – Surrey / southern access to Heathrow)
 - Great Western Mainline (London – Reading / western access to Heathrow)
 - Midlands and West Coast Mainline (London – Luton – Bedford / Milton Keynes)
-

Achievements?

- Set up governance structure that is accountable to council leaders, chief execs and officers
 - East of England and WSE responses to national consultations
 - Engaging and responding to London Plan and City for All Londoners
 - Leading on some key work streams, such as demographics and infrastructure Lobbying
 - Pushed for joint communications strategy
 - WSE Stocktake – common evidence base
 - Working jointly with LEPs and stakeholders in the East – Infrastructure workshop
 - Demographics workshop
 - LSE Migration Review for the WSE
-

Any questions?

More info: <http://www.eelga.gov.uk/innovation-programme/engagement-with-wse.aspx>

cinar.altun@eelga.gov.uk
